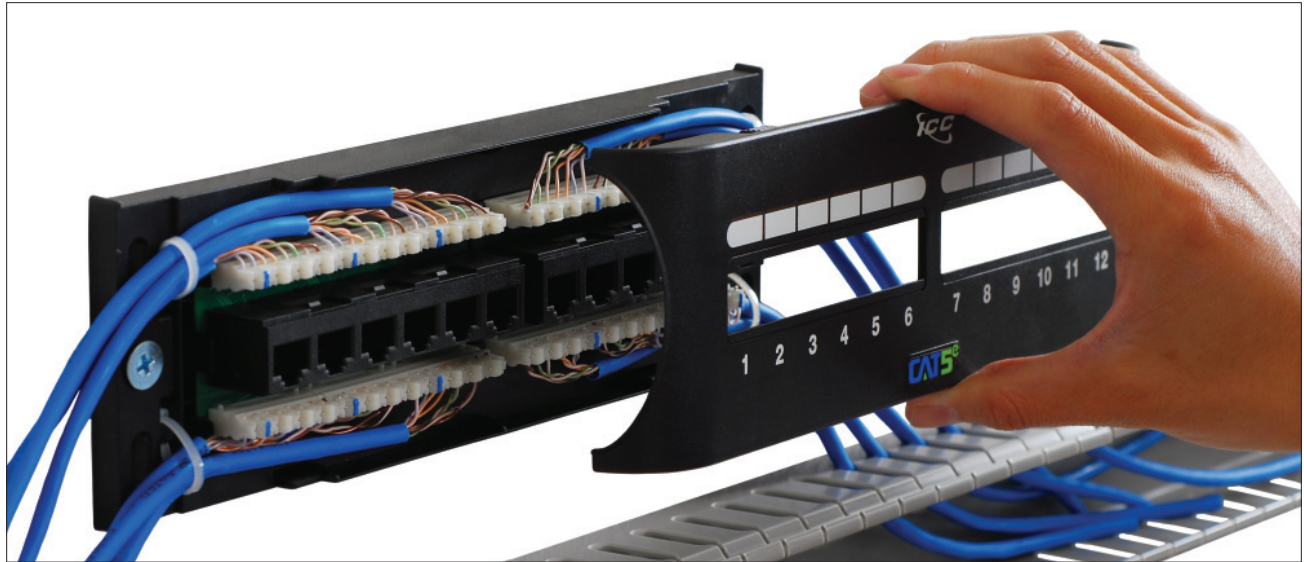


ICC New Front Access Zero U Patch Panels



Fullerton, California - ICC is introducing new Front Access Zero U Patch Panels. Available in CAT 6 and CAT 5e; Front Access Patch Panels have been tested to exceed TIA performance standards. With a low-profile design sitting at only 1.17" height, they're perfect for tight spaces. Panels can be mounted on a backboard with mounting screws provided. They can also be mounted on TIA rack vertically, or even over existing rack panels and not take up any additional rack space. A removable cover protects and routes terminated cables from the left and right. Front termination with true 110 IDCs allow convenient moves, add-ons and changes. Colored diagrams provide wiring instructions for both the 568-A and B wiring. Each panel has 12 ports, ideal for a small business installation or for a quick add-on to an existing network. Each jack has contacts coated with 50 micro-inch gold for corrosion resistance

and high speed performance, the best in the industry.

ICC's Front Access Patch Panels are available through a nationwide network of ICC Elite Preferred Distributors™. To locate a distributor near you, visit www.icc.com/distributor or call ICC at 888-ASK-4ICC (275-4422).

About ICC

ICC is a leading manufacturer of residential and commercial structured cabling products governed by strict ISO 9001:2008 standards. With 29 years of innovation, ICC products have established a reputation of premium quality, proven performance and competitive prices supporting voice, data, audio, video and fiber optic connectivity. For more information, visit ICC's website at www.icc.com.